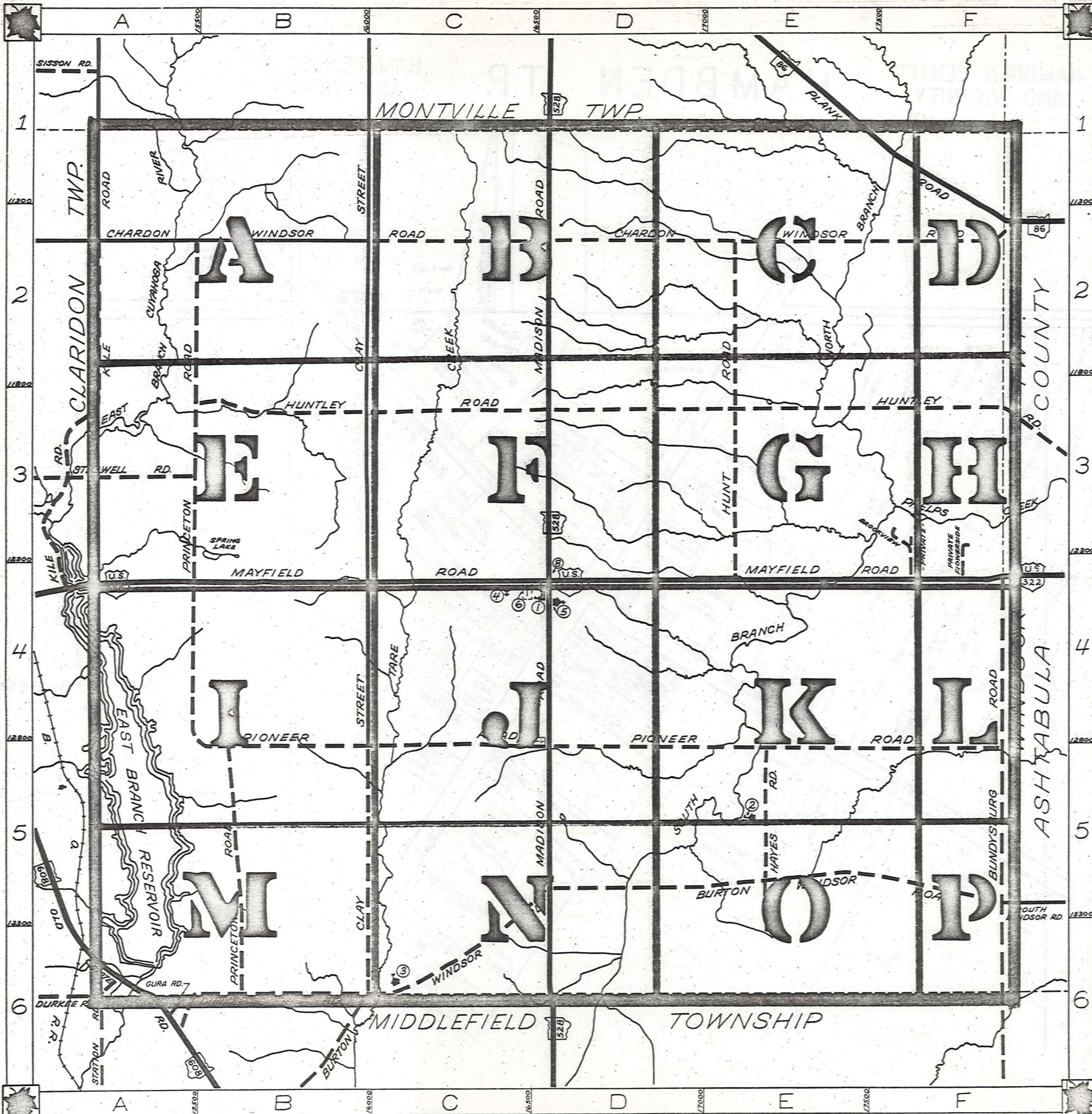


# ROAD INDEX



A	J	STILLWELL RD. A3
B	K	BROOKVIEW RD. F3 BUNDYSBURG RD. F4-F6 BURTON WINDSOR RD. C6-F5
C	L	CHARDON WINDSOR RD. A2-F2 CLAY STREET B1-B6
D	M	MADISON RD. D1-D6 MAYFIELD RD. A4-F4
E	N	DURKEE RD. A6-B6
F	O	OLD STATE RD. A6
G	P	FLOWERSIDE RD. F4
H	Q	PIONEER RD. B5-F5 PLANK RD. E1-F2 PRINCETON RD. B2-B6
I	R	HAYES RD. E5 HUNTLEY RD. B3-F3 HUNT RD. E2-E4
J	S	
K	T	KILE RD. A1-A4 TRAILWOOD RD. F4
L	U	
M	V	
N	W	
O	X	
P	Y	
Q	Z	

- ① HUNTSBURG ELEM. SCHOOL
- ② AMISH SCHOOL
- ③ AMISH SCHOOL
- ④ HUNTSBURG BAPTIST CH.
- ⑤ HUNTSBURG CONGREGATIONAL CH.
- ⑥ HUNTSBURG CEMETERY
- ⑦ HUNTSBURG CEMETERY
- ⑧ UNITED STATES POST OFFICE
- ⑨
- ⑩

## HUNTSBURG TOWNSHIP

SCALE: 1" = 2000'

ROBERT E. PHILLIPS,  
GEAUGA COUNTY ENGINEER

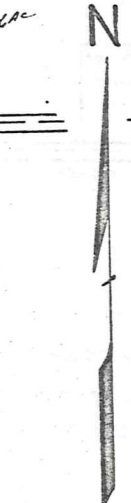
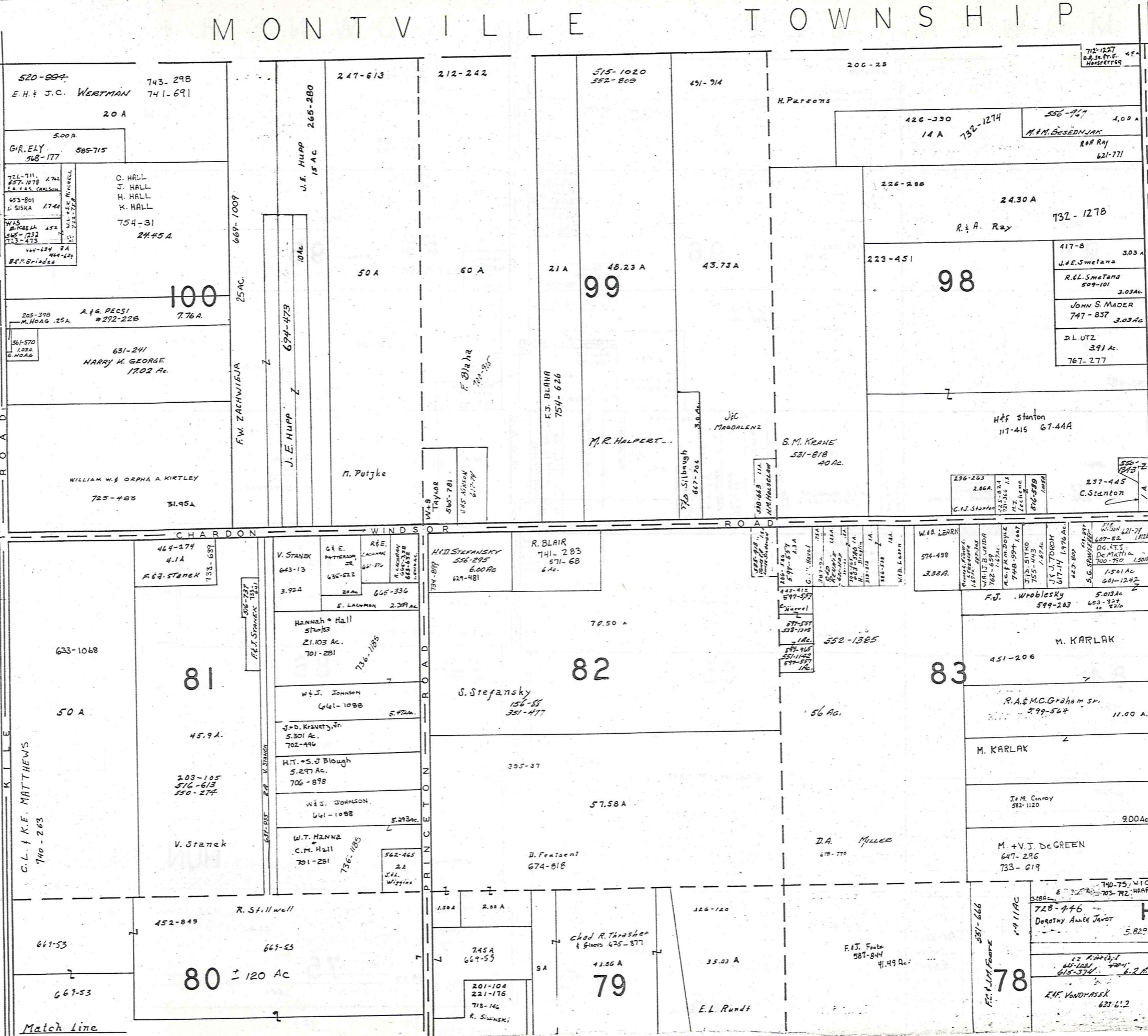
--- UNPAVED ROADS  
--- TOWNSHIP LINE  
--- PAVED ROADS  
--- COUNTY LINE



# MONTVILLE TOWNSHIP

TOWNSHIP

CLARIDON



SCALE 1 = 300

JAN 1, 1986

A	B	C	D
E	F	G	H
I	J	K	L
M	N	O	P

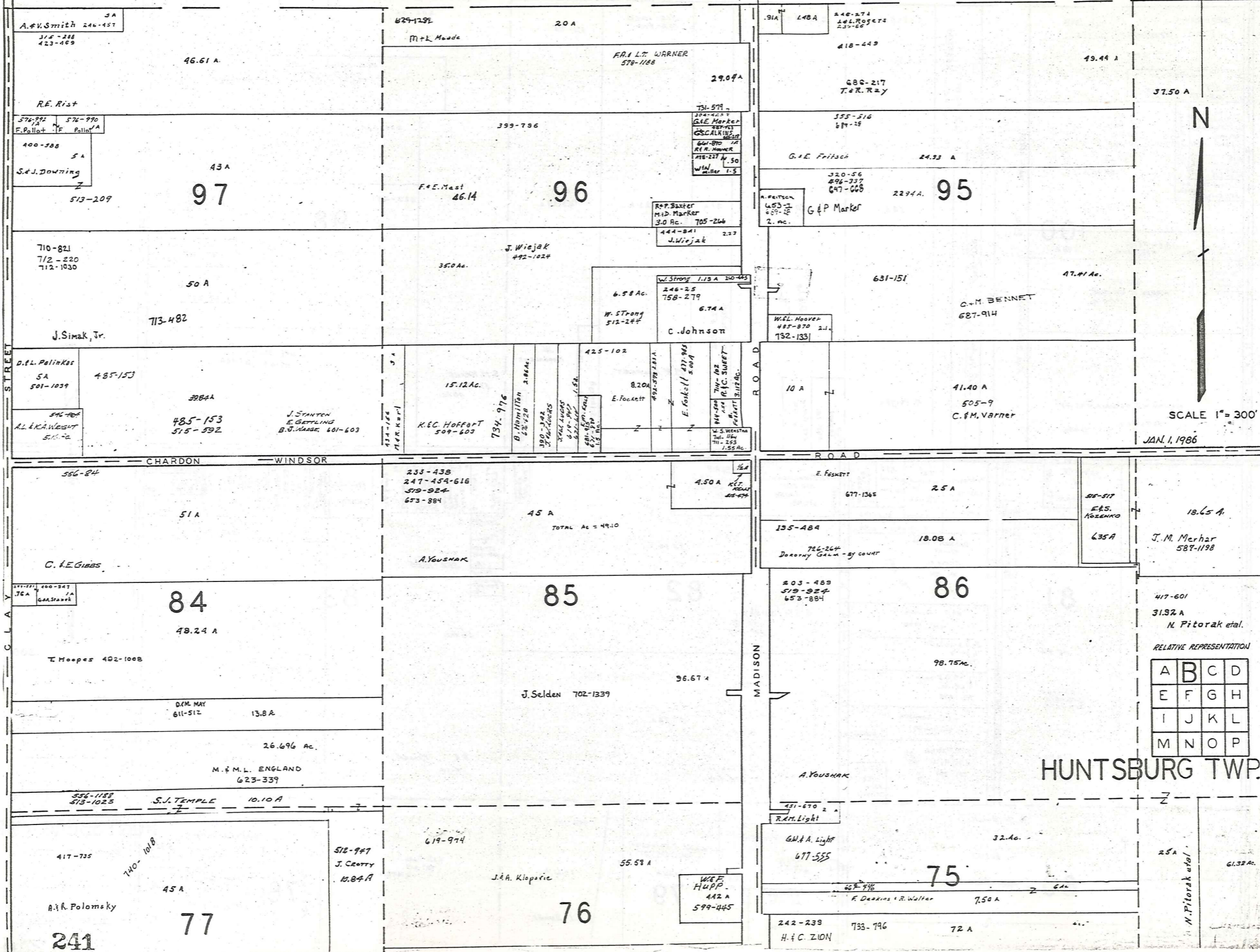
HUNTSBURG TWP

RELATIVE REPRESENTATION

Match Line

MONTVILLE

TOWNSHIP



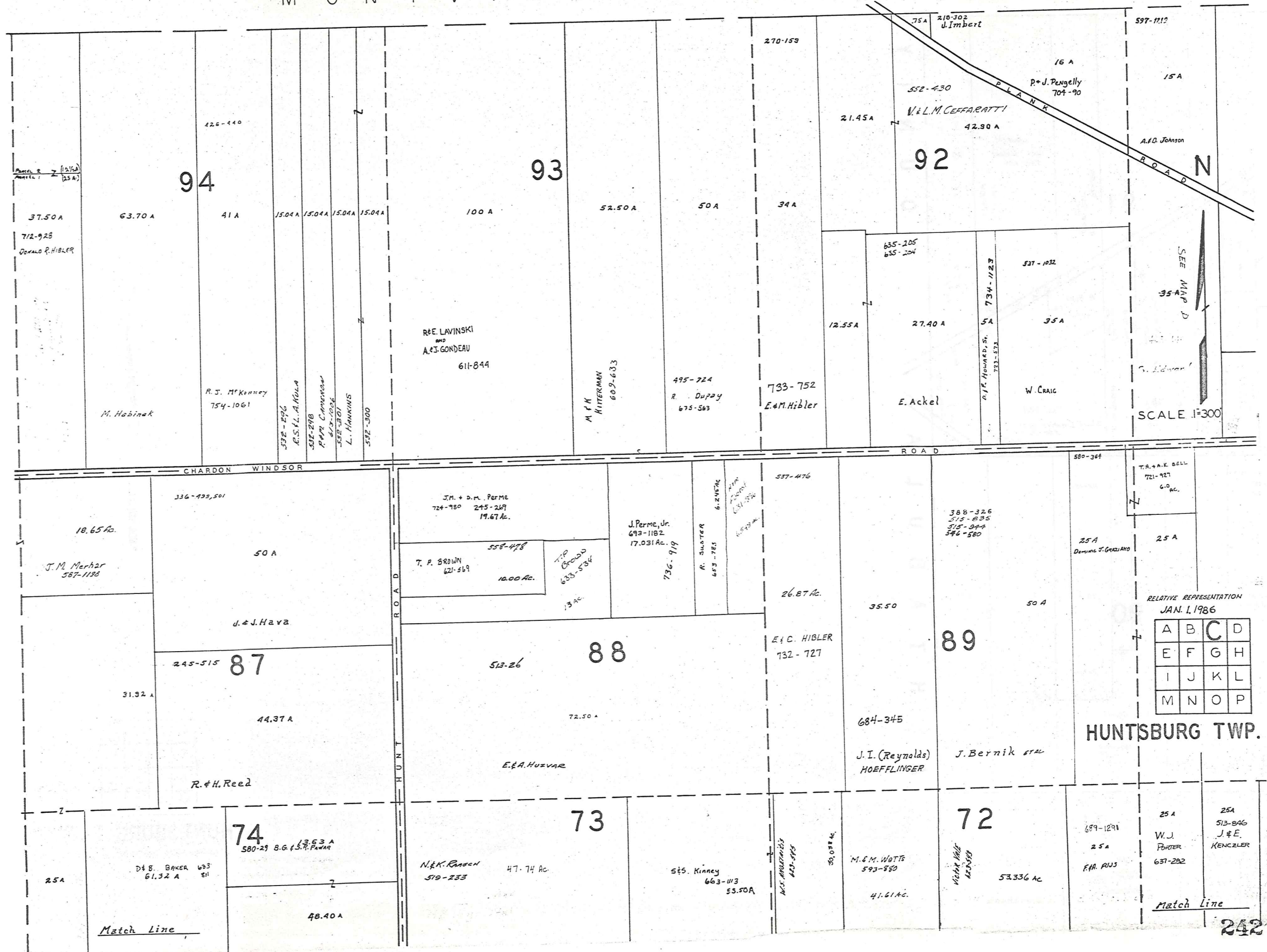
SCALE 1" = 300'  
JAN. 1, 1986

RELATIVE REPRESENTATION

A	B	C	D
E	F	G	H
I	J	K	L
M	N	O	P

HUNTSBURG TWP.

MONTVILLE TOWNSHIP



SEE MAP D  
SCALE 1"=300'

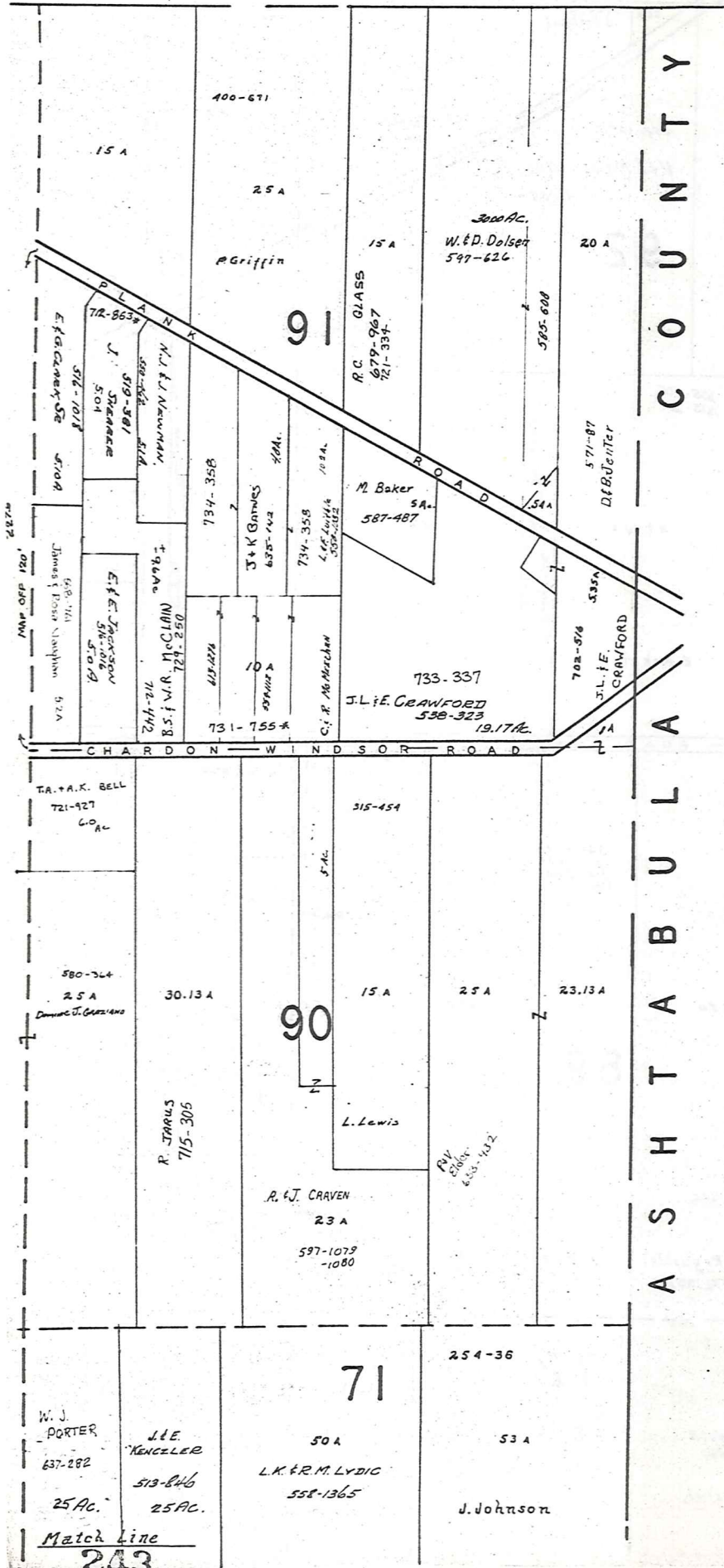
RELATIVE REPRESENTATION  
JAN. 1, 1986

A	B	C	D
E	F	G	H
I	J	K	L
M	N	O	P

HUNTSBURG TWP.

Match Line

MONTVILLE TWP.



C O U N T Y  
A S H T A B U L A

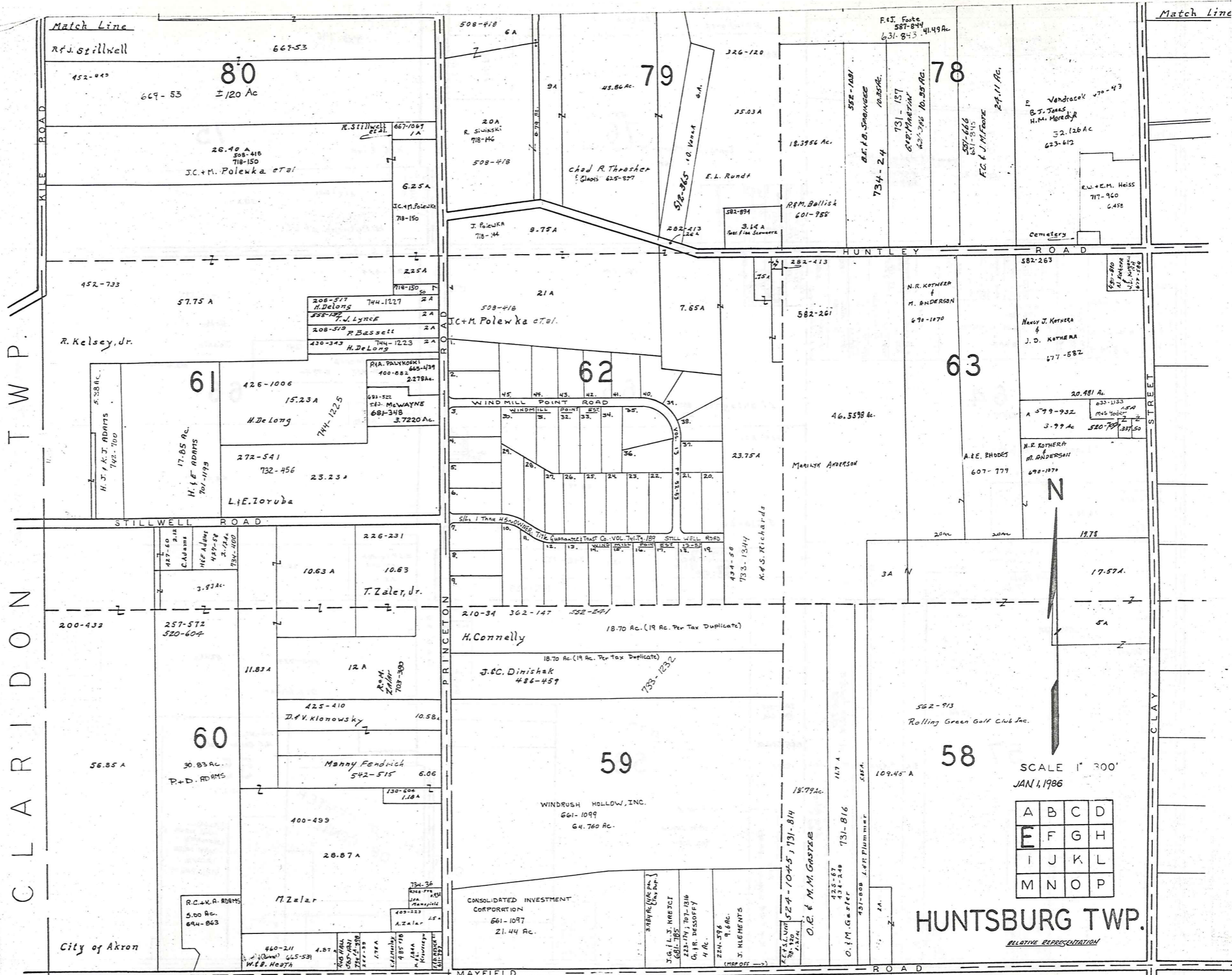


SCALE 1"=300'

JAN. 1, 1986

A	B	C	D
E	F	G	H
I	J	K	L
M	N	O	P

HUNTSBURG TWP.  
RELATIVE REPRESENTATION



CLARIDON TWP.

SCALE 1" = 300'  
JAN 1, 1986

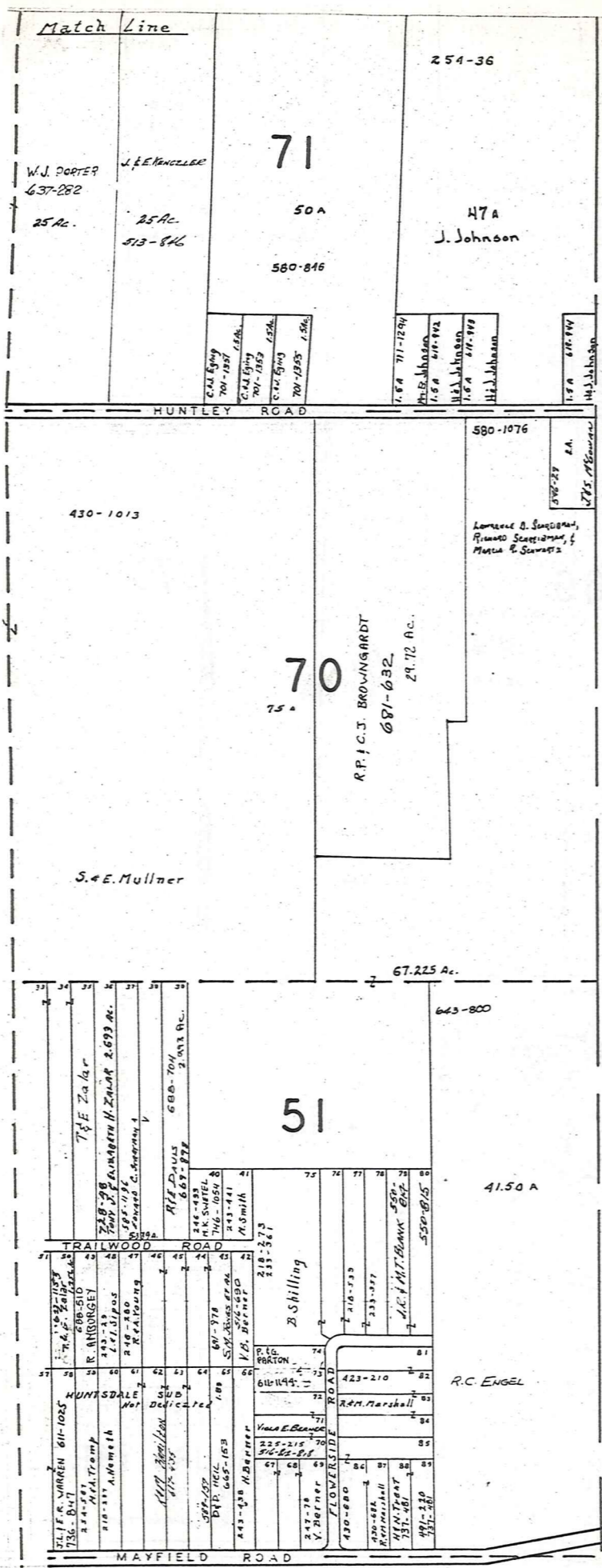
A	B	C	D
E	F	G	H
I	J	K	L
M	N	O	P

**HUNTSBURG TWP.**

RELATIVE REPRESENTATION







A S H T A B U L A C O U N T Y



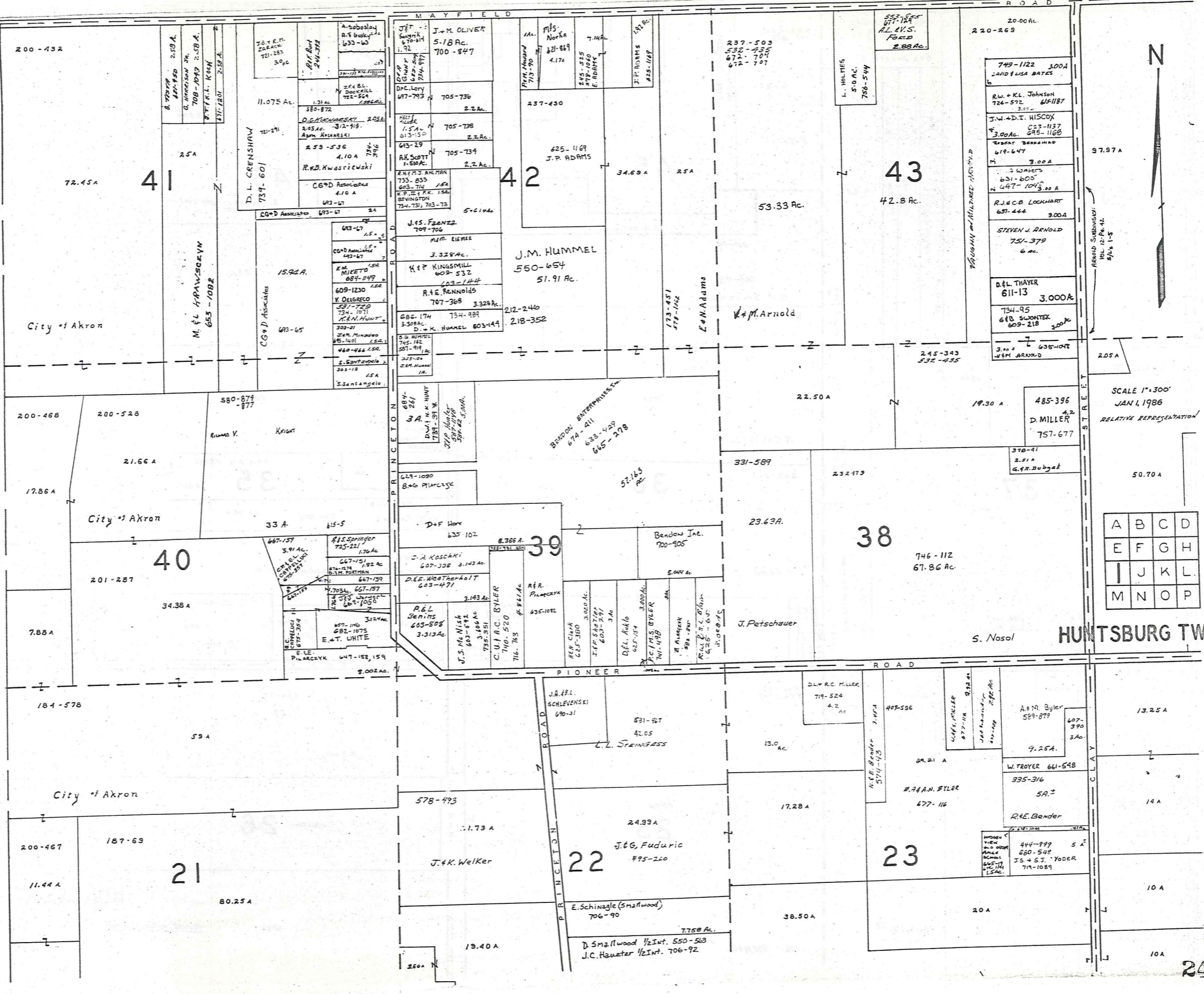
JAN 1, 1986  
Scale 1" = 300'

A	B	C	D
E	F	G	H
I	J	K	L
M	N	O	P

RELATIVE REPRESENTATION

HUNTSBURG TWP.

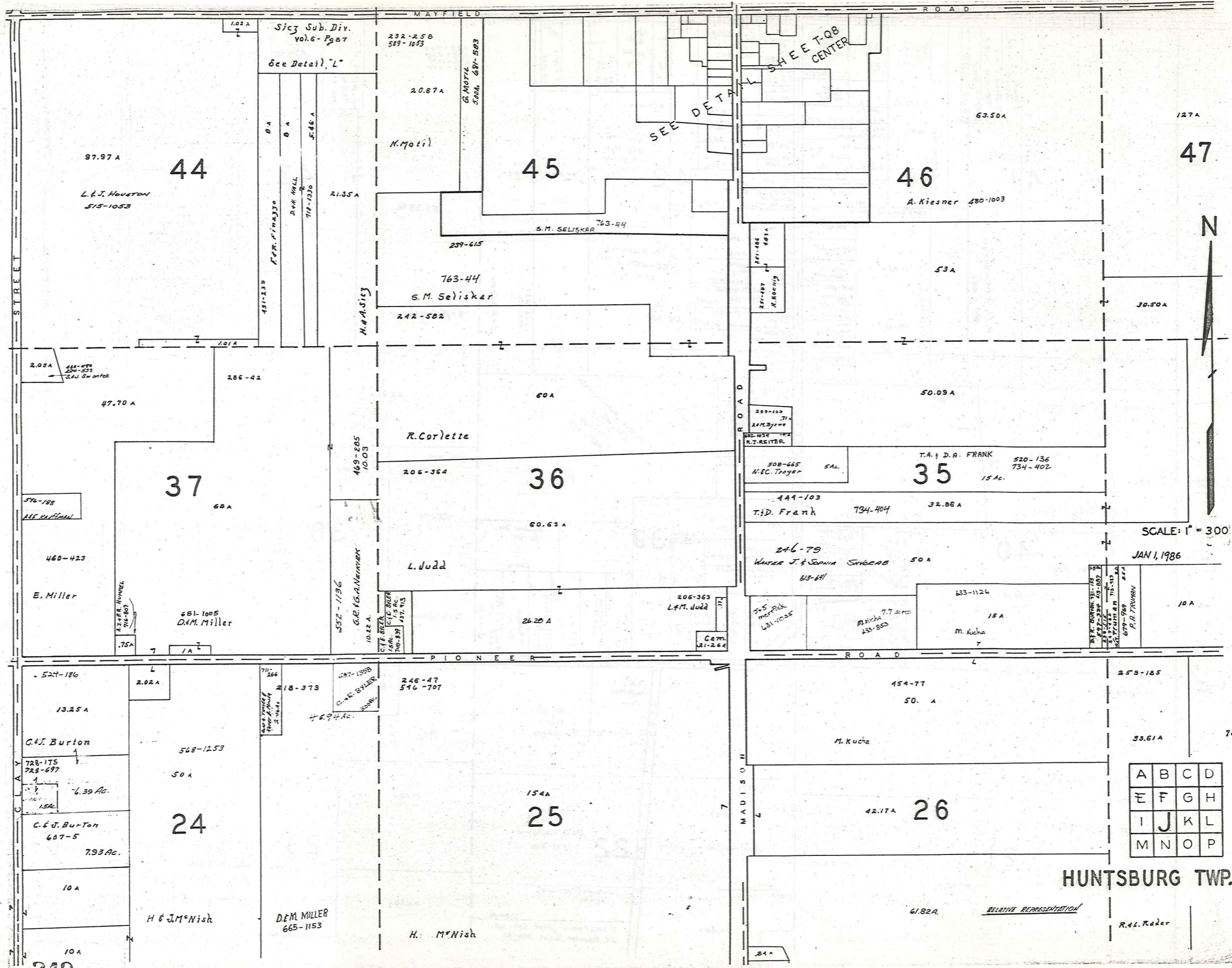
C L A R I D O N T O W N S H I P



SCALE 1"=300'  
JAN 1, 1986  
RELATIVE REPRESENTATION

A	B	C	D
E	F	G	H
I	J	K	L
M	N	O	P

HUNTSBURG TWP.



Sicy Sub. Div.  
Vol. 6 - Page 7  
232-258  
589-1053  
See Detail "L"

97.97 A  
L. & J. Houston  
515-1053

44

45

46

47

37

36

35

24

25

26

A	B	C	D
E	F	G	H
I	J	K	L
M	N	O	P

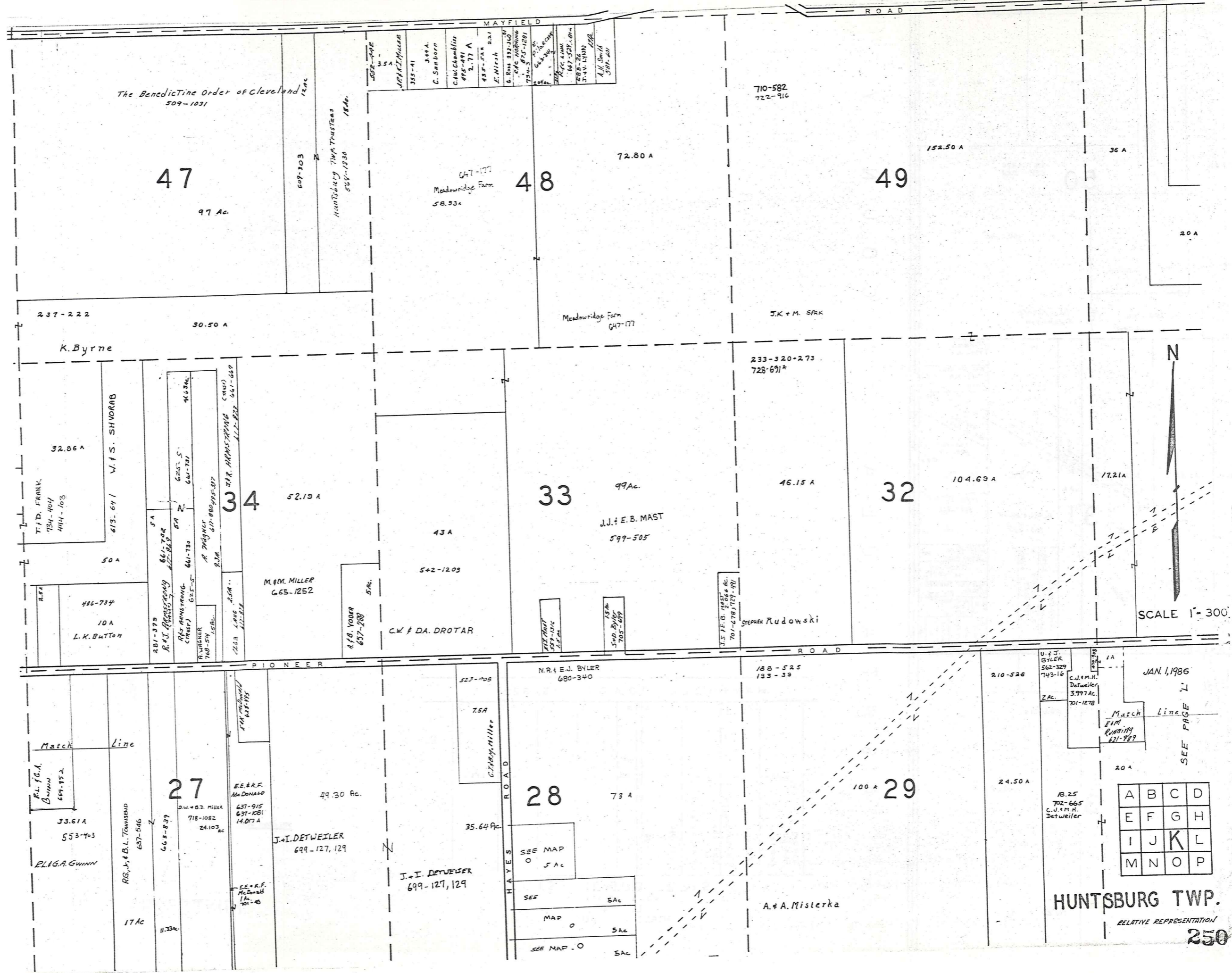
HUNTSBURG TWP.

SCALE: 1" = 300'

JAN 1, 1986

RELATIVE REPRESENTATION

R. & L. Rader



The Benedictine Order of Cleveland  
309-1031

47

97 Ac.

48

647-177  
Meadowridge Farm  
58.934

49

710-582  
722-916

152.50 A

36 A

20 A

237-222

30.50 A

K. Byrne

32.86 A

T. D. FRANK  
734-404  
444-103

V. F. S. SHVORAB  
613-641

50 A

486-734  
10 A  
L. K. BUTTCH

281-375  
R. J. PROBST  
66-722  
612-841  
54

R. J. PROBST  
66-722  
612-841  
54

R. J. PROBST  
66-722  
612-841  
54

R. J. PROBST  
66-722  
612-841  
54

R. J. PROBST  
66-722  
612-841  
54

R. J. PROBST  
66-722  
612-841  
54

R. J. PROBST  
66-722  
612-841  
54

R. J. PROBST  
66-722  
612-841  
54

R. J. PROBST  
66-722  
612-841  
54

R. J. PROBST  
66-722  
612-841  
54

R. J. PROBST  
66-722  
612-841  
54

R. J. PROBST  
66-722  
612-841  
54

R. J. PROBST  
66-722  
612-841  
54

R. J. PROBST  
66-722  
612-841  
54

R. J. PROBST  
66-722  
612-841  
54

R. J. PROBST  
66-722  
612-841  
54

R. J. PROBST  
66-722  
612-841  
54

R. J. PROBST  
66-722  
612-841  
54

R. J. PROBST  
66-722  
612-841  
54

R. J. PROBST  
66-722  
612-841  
54

R. J. PROBST  
66-722  
612-841  
54

R. J. PROBST  
66-722  
612-841  
54

R. J. PROBST  
66-722  
612-841  
54

R. J. PROBST  
66-722  
612-841  
54

R. J. PROBST  
66-722  
612-841  
54

R. J. PROBST  
66-722  
612-841  
54

R. J. PROBST  
66-722  
612-841  
54

R. J. PROBST  
66-722  
612-841  
54

R. J. PROBST  
66-722  
612-841  
54

R. J. PROBST  
66-722  
612-841  
54

R. J. PROBST  
66-722  
612-841  
54

R. J. PROBST  
66-722  
612-841  
54

R. J. PROBST  
66-722  
612-841  
54

R. J. PROBST  
66-722  
612-841  
54

U. J. BYLER  
562-329  
743-16  
ZAC

C. J. M. H. Detweiler  
3.997 Ac.  
701-1278

JAN. 1, 1986

Match Line  
EAM  
RUMING  
621-789

A	B	C	D
E	F	G	H
I	J	K	L
M	N	O	P

HUNTSBURG TWP.

RELATIVE REPRESENTATION

250

SCALE 1" = 300'



Match Line

R. L. G. A. GWINN  
649-952  
33.61 A  
553-703  
ELIGA GWINN

27

17 AC

R. G. J. & B. L. TOWNSEND  
637-546  
668-839

EE & KF. McDONALD  
637-915  
637-1081  
14,077 A

J. I. DETWEILER  
699-127, 129

49.30 Ac.

J. I. DETWEILER  
699-127, 129

28

73 A

M. R. E. J. BYLER  
680-340

7.5 A  
C. J. J. Miller

35.64 Ac

SEE MAP - O 5 Ac  
SEE MAP - O 5 Ac  
SEE MAP - O 5 Ac

188-525  
183-39

100 \* 29

A. A. MISTERKA

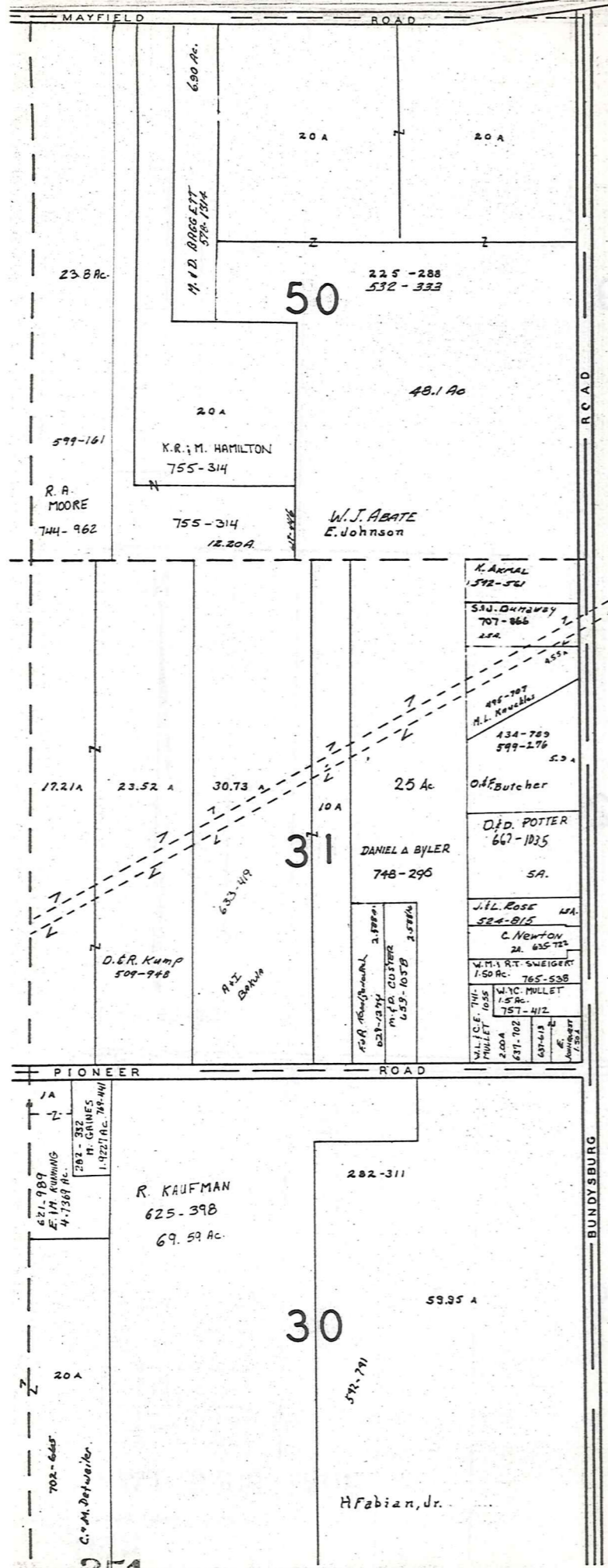
210-526

24.50 A

U. J. BYLER  
562-329  
743-16  
ZAC  
C. J. M. H. Detweiler  
3.997 Ac.  
701-1278

20 A

18.25  
702-665  
C. J. M. H. Detweiler



A S H T A B U L A C O U N T Y

MAYFIELD ROAD US 322							
1	2	3	4	5	6	7	8
1.08 A	1 A	1 A	1 A	.60 A	1 A	1 A	1.13 A
409-391 653-111 F. H. Johnson	491-295 C. R. Johnson	285-198 H. Keyes et al.	D. H. HILL 1.50				

SICZ SUBDIVISION  
 VOL. 6 PG. 87  
 LOT 44  
 SCALE 1" = 100'



SCALE 1" = 300'

JAN 1, 1986

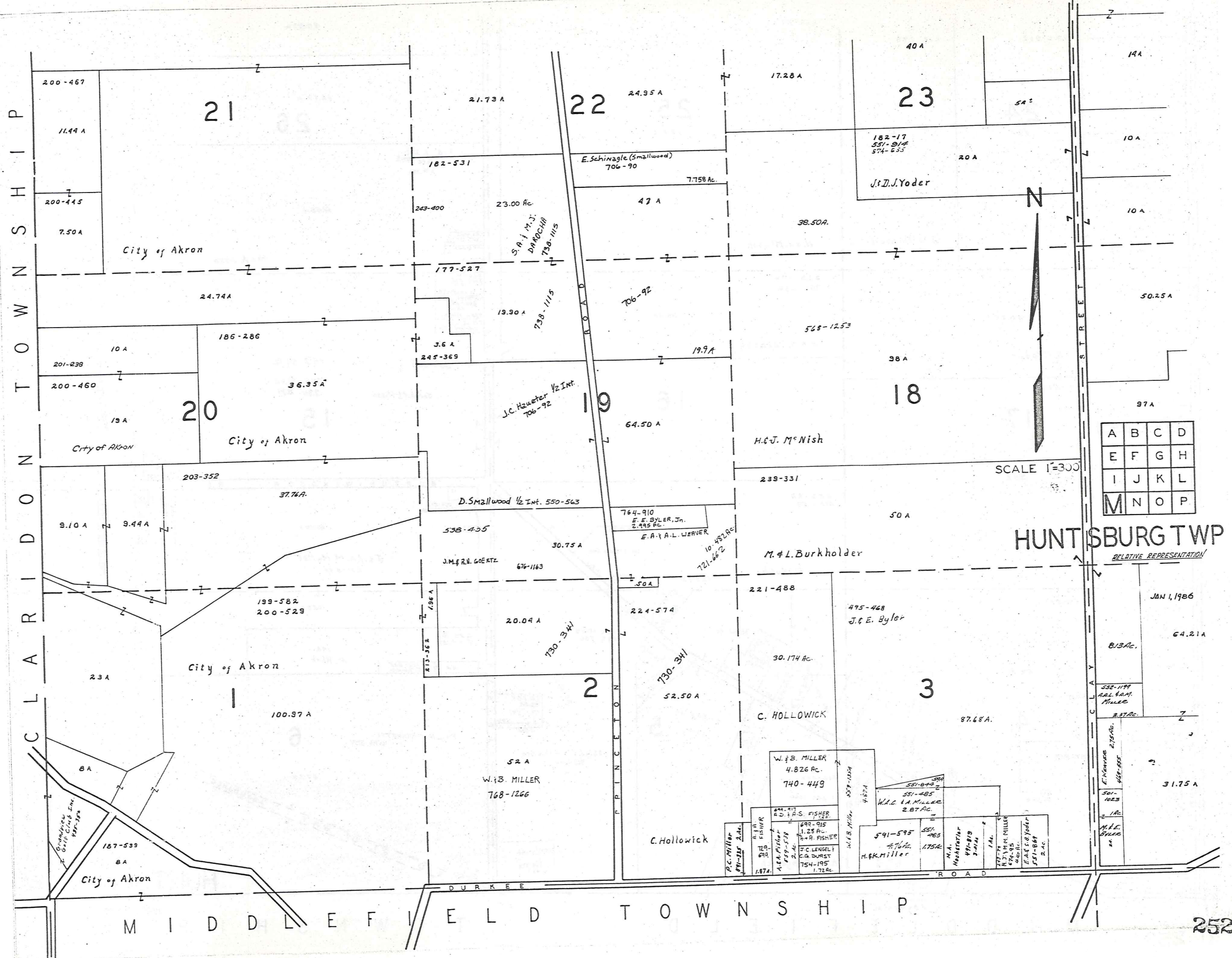
A	B	C	D
E	F	G	H
I	J	K	L
M	N	O	P

RELATIVE REPRESENTATION

HUNTSBURG TWP.

C L A R I D O N T O W N S H I P

M I D D L E F I E L D T O W N S H I P



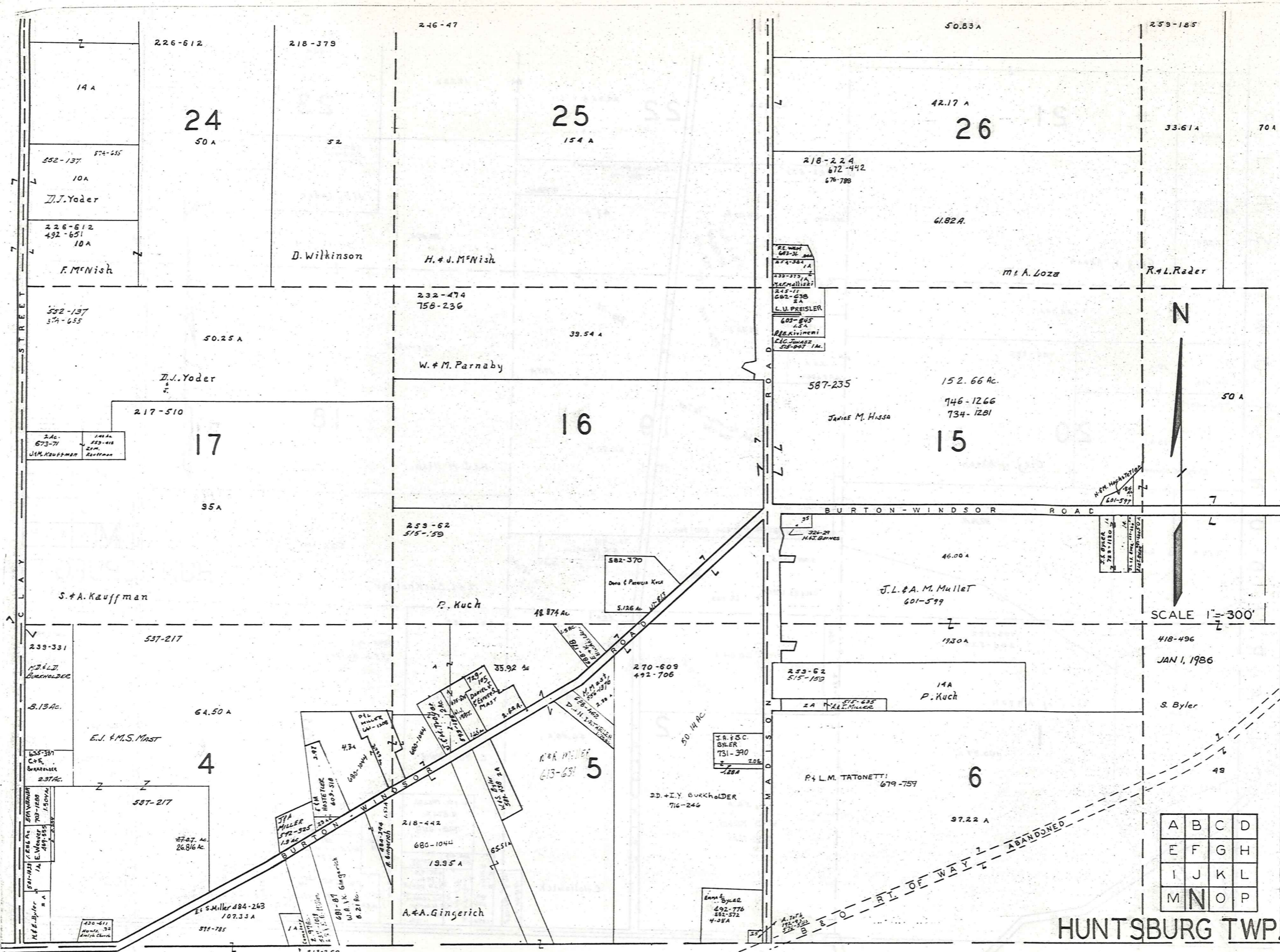
A	B	C	D
E	F	G	H
I	J	K	L
M	N	O	P

SCALE 1"=300'

HUNT SBURG TWP

RELATIVE REPRESENTATION

JAN 1, 1986



SCALE 1" = 300'

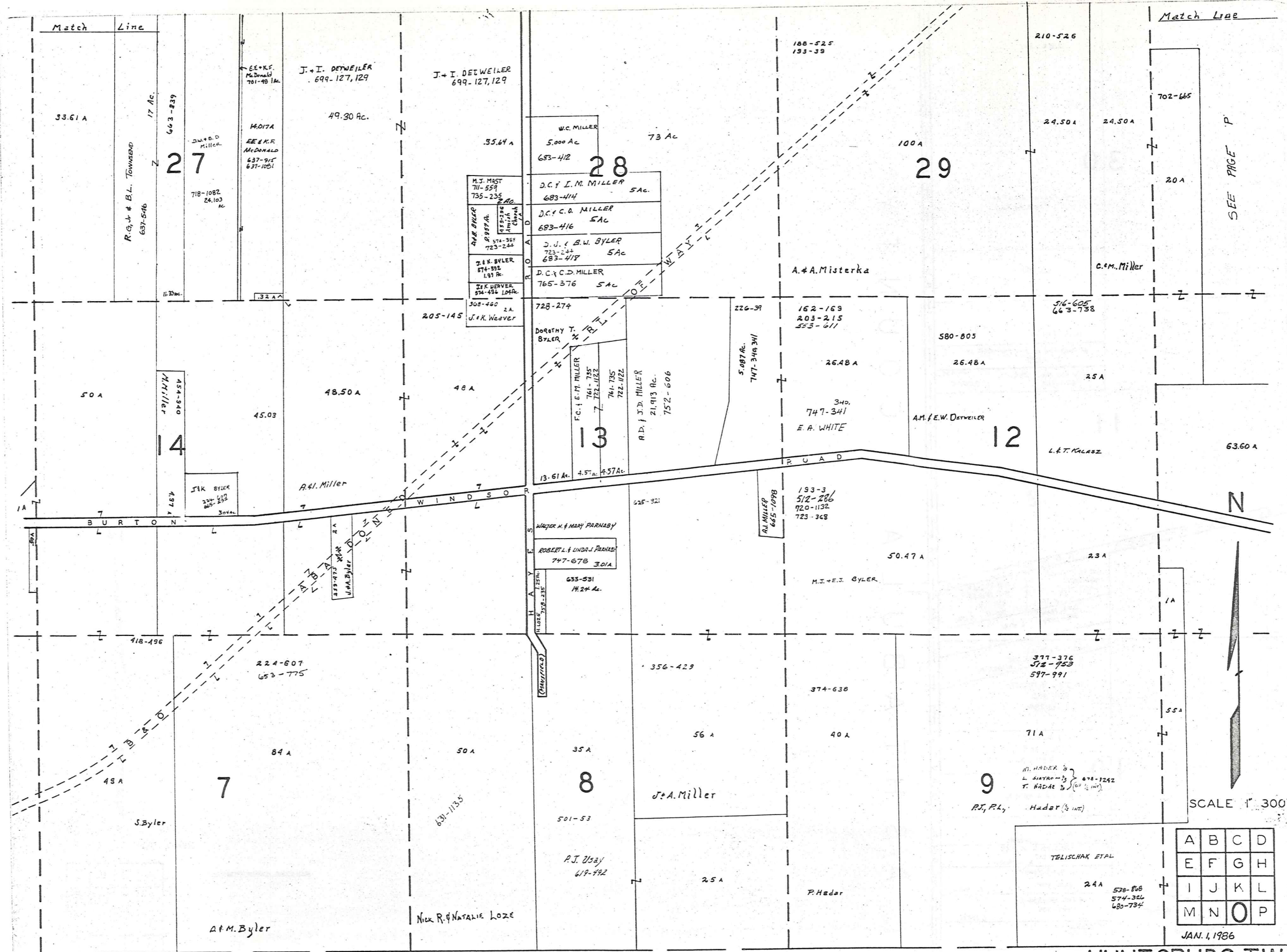
418-496  
JAN 1, 1986

A	B	C	D
E	F	G	H
I	J	K	L
M	N	O	P

HUNTSBURG TWP.

RELATIVE REPRESENTATION

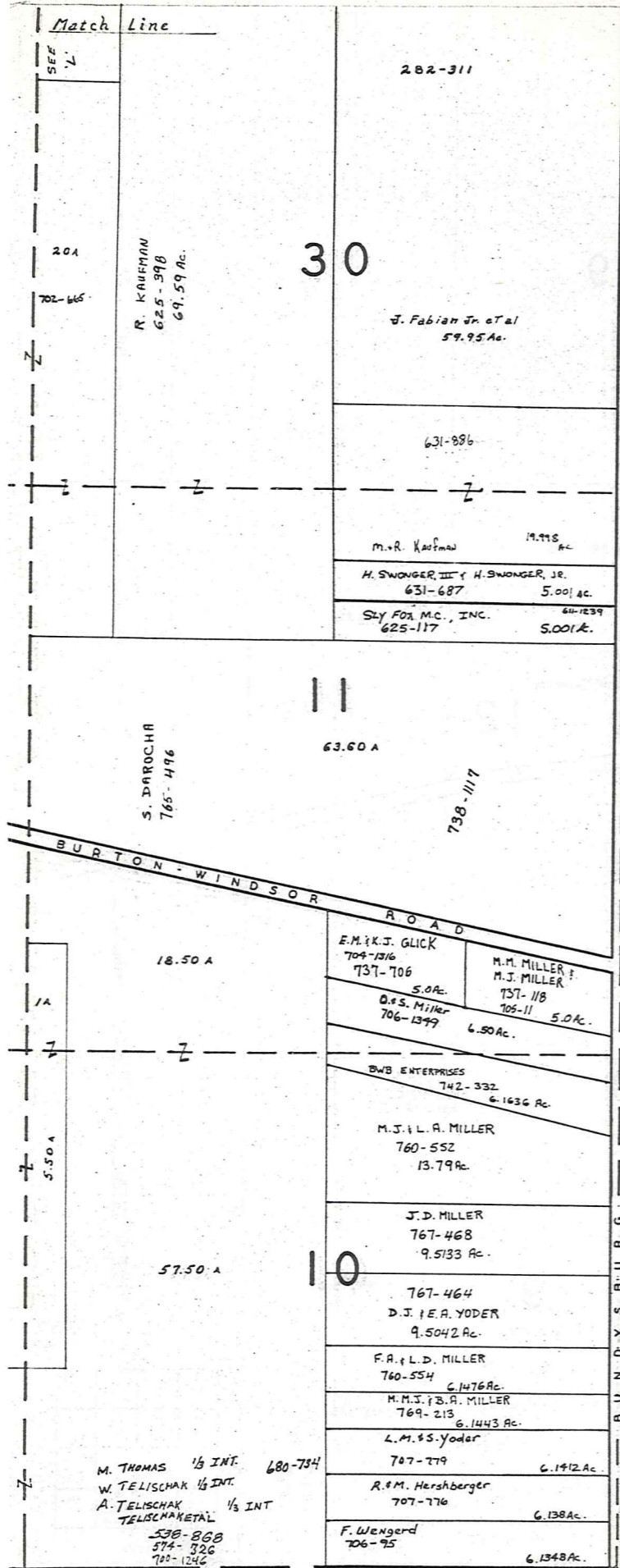
M I D D L E F I E L D T O W N S H I P



SCALE 1" = 300'

A	B	C	D
E	F	G	H
I	J	K	L
M	N	O	P

JAN. 1, 1986



ASH TABULA COUNTY ROAD



SCALE 1" = 300  
JAN 1, 1986

RELATIVE REPRESENTATION

A	B	C	D
E	F	G	H
I	J	K	L
M	N	O	P

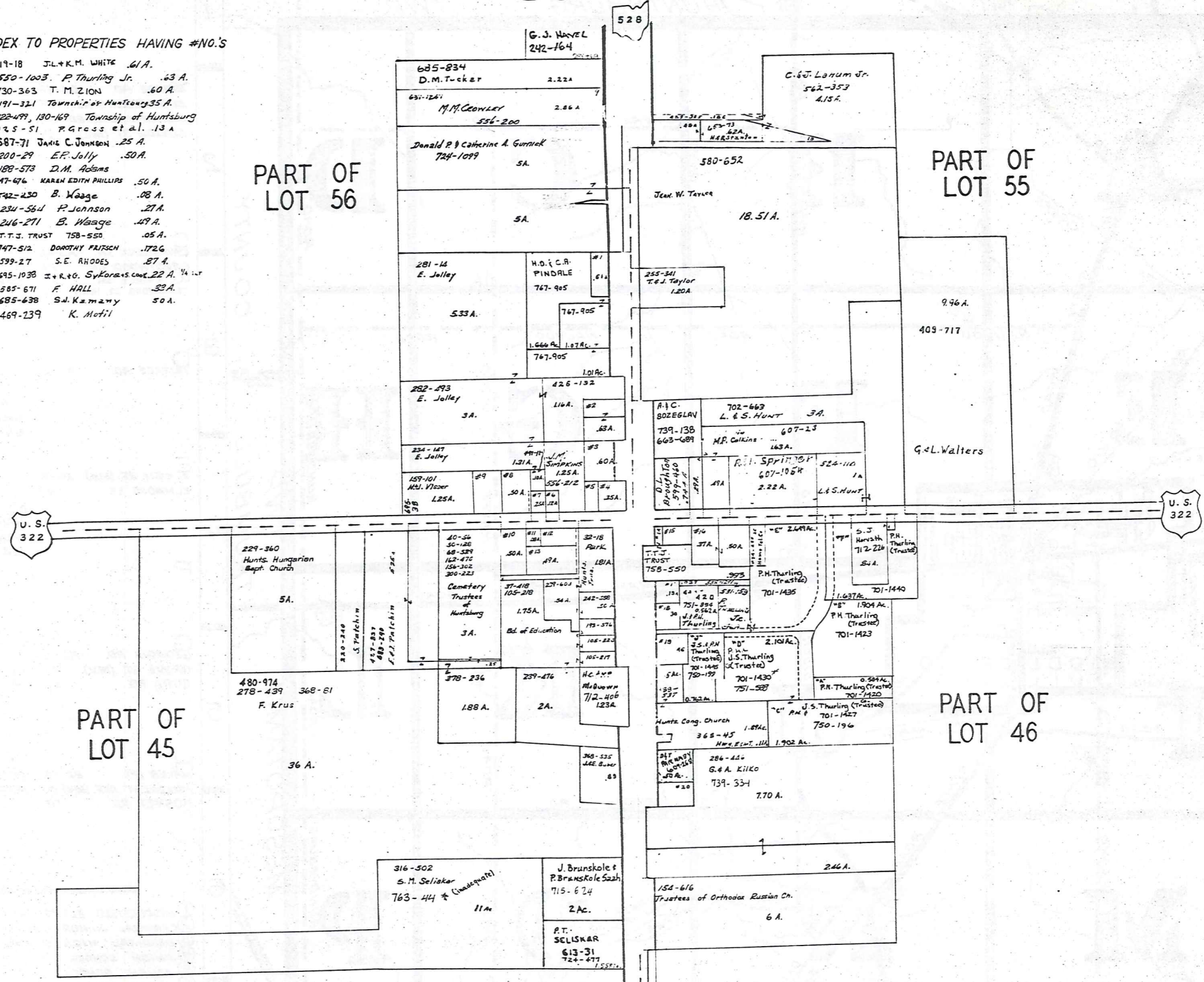
MIDDLEFIELD TWP. 255

HUNTSBURG TWP.

# HUNTSBURG TP. CENTER

## INDEX TO PROPERTIES HAVING #NO.'S

- #1 719-18 J.L. & K.M. WHITE .61 A.
- #2 550-1003 P. Thurling Jr. .63 A.
- #3 730-363 T. M. ZION .60 A.
- #4 491-321 Township of Huntsburg 35 A.
- #5 122-499, 130-169 Township of Huntsburg
- #6 425-51 P. Gross et al. 13 A.
- #7 587-71 James C. Johnson .25 A.
- #8 200-29 E.F. Jolly .50 A.
- #9 188-573 D.M. Adams
- #10 747-676 KAREN EDITH PHILLIPS .50 A.
- #11 542-230 B. Waage .08 A.
- #12 234-564 P. Johnson .27 A.
- #13 246-271 E. Waage .49 A.
- #14 T.T.J. TRUST 758-550 .05 A.
- #15 747-512 DOROTHY FRISCH .1726
- #16 599-27 S.E. RHODES .87 A.
- #17 695-1938 J. & R. G. Sykora's cont. 22 A. 1/4
- #18 685-671 F. HALL .33 A.
- #19 685-638 S.J. Kamamy .50 A.
- #20 469-239 K. Motil



JAN. 1, 1986  
SCALE: 1 IN. = 200'

RELATIVE REPRESENTATION

# Explanation and Use Sheet for Geauga County, Ohio

SAMPLE (PARTIAL) COUNTY INDEX MAP



- Township Boundary
- Township Name
- Village Boundary
- Village Name
- Tract Lot Number
- Street Name
- Acreage
- Deed Book & Page
- Owners Name
- Denotes Continous Ownership

SAMPLE (PARTIAL) MAP PAGE



- Map Page Number
- Village Name
- Village Boundary
- Township Name

SAMPLE (PARTIAL) MUNICIPALITY INDEX MAP



- Street Name
- Village Name
- Township Name

## USE OF THE MAP VOLUME

1. LOCATE THE GENERAL AREA OF INTEREST ON THE COUNTY INDEX MAP, ATLAS PAGE 'B', AND NOTE THE MUNICIPALITY NAME (TOWNSHIP OR VILLAGE).
2. REFER TO THE TABLE OF CONTENTS, ATLAS PAGE 'C', AND NOTE THE BEGINNING ATLAS PAGE NUMBER FOR THE MUNICIPALITY OF INTEREST.
3. TURN TO THE PAGE INDICATED. ON THIS PAGE WILL APPEAR AN INDEX MAP FOR THAT MUNICIPALITY.
4. LOCATE THE GENERAL AREA OF INTEREST AND NOTE THE MAP PAGE NUMBER. THIS MAY BE EITHER A LETTER OR A NUMBER.
5. MAP PAGES ARE IN ALPHABETICAL (OR NUMERICAL) SEQUENCE FOLLOWING THE MUNICIPALITY INDEX MAP. FOLLOW SEQUENCE TO THE MAP PAGE INDICATED.
6. LOCATE SPECIFIC PARCEL OF INTEREST AND NOTE THE DESIRED INFORMATION.

NOTE: ON SOME MAPS YOU MAY BE REFERRED TO A DETAIL SHEET SHOWING AN ENLARGEMENT OF THE AREA. THESE MAPS ARE FOUND AT THE END OF THE REGULAR MAP PAGES IN EACH MUNICIPALITY IN EITHER ALPHABETICAL OR NUMERICAL SEQUENCE.

NOTE: CHARDON VILLAGE HAS TITLE SHEETS. TO LOCATE OWNERS NAME, NOTE THE PARCEL NUMBER, REFER TO THE TITLE PAGE FOLLOWING THE MAP OF INTEREST, FOLLOW NUMERICAL SEQUENCE TO THE PARCEL NUMBER OF INTEREST AND NOTE THE DESIRED INFORMATION. IN ALL OTHER MUNICIPALITIES THE OWNERS NAME APPEARS ON THE MAP PAGE.

This book is the property of REAL ESTATE DATA, INC. and is distributed by REDI under a leasing arrangement requiring return to REDI upon termination of the lease. REDI reserves the right to reclaim this book if found in the possession of any firm or person where possession was obtained through any unauthorized source.